



International Futures Forum

Ready for Anything

Designing Resilience for a Transforming World

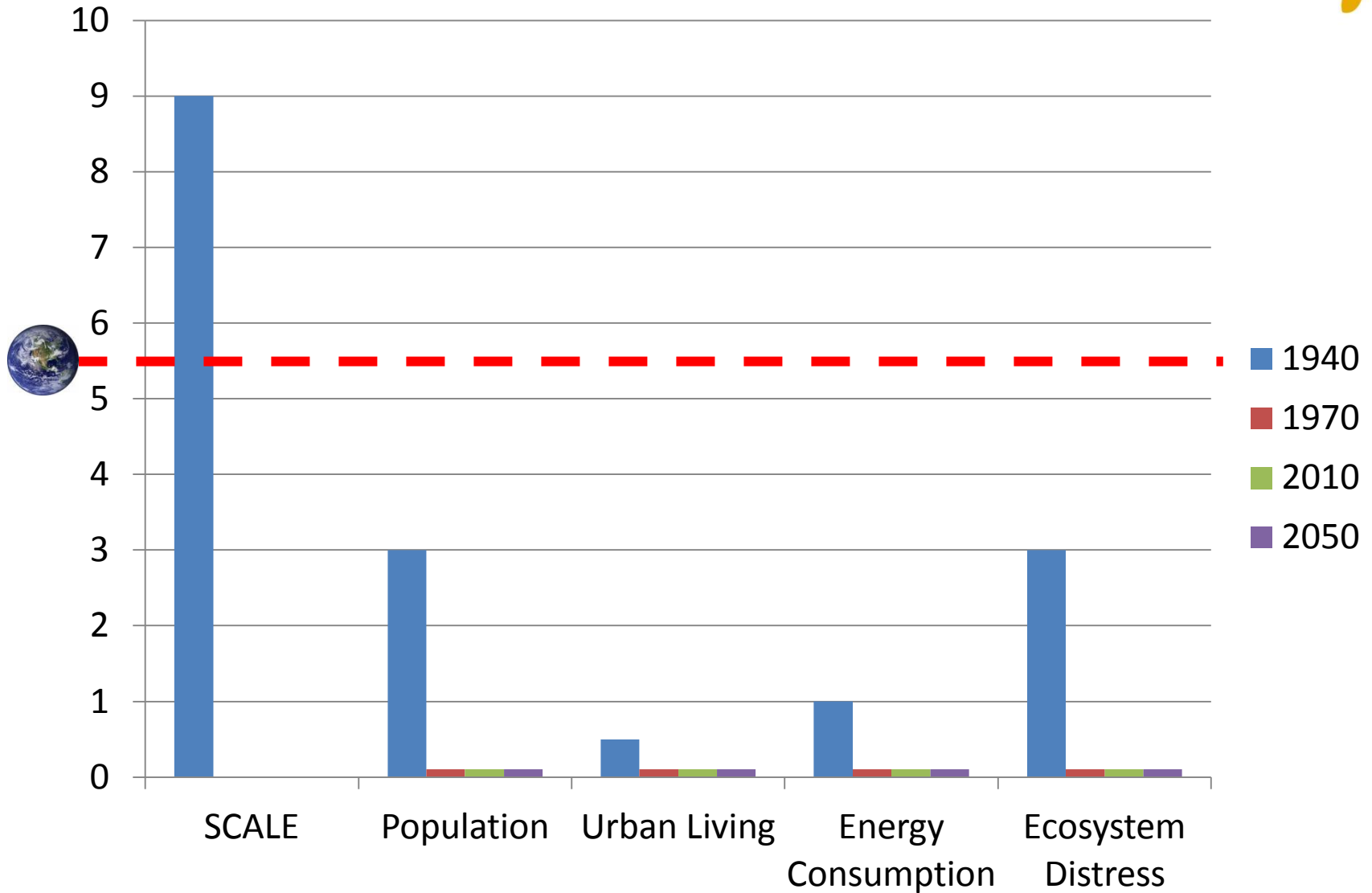
Anthony Hodgson

6th December 2011

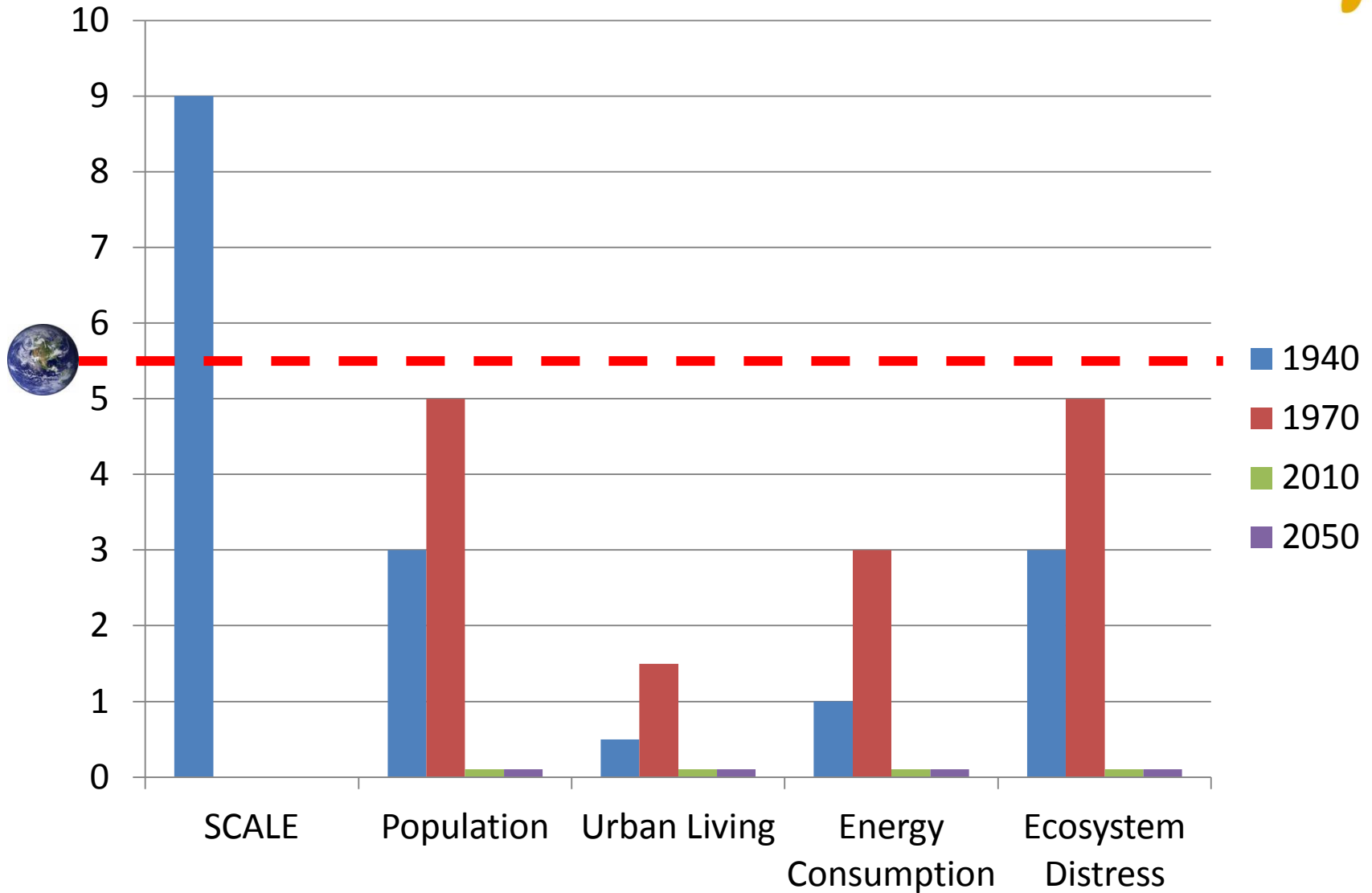
Email: tony@internationalfuturesforum.com

Twitter: [@tonyworldvision](https://twitter.com/tonyworldvision)

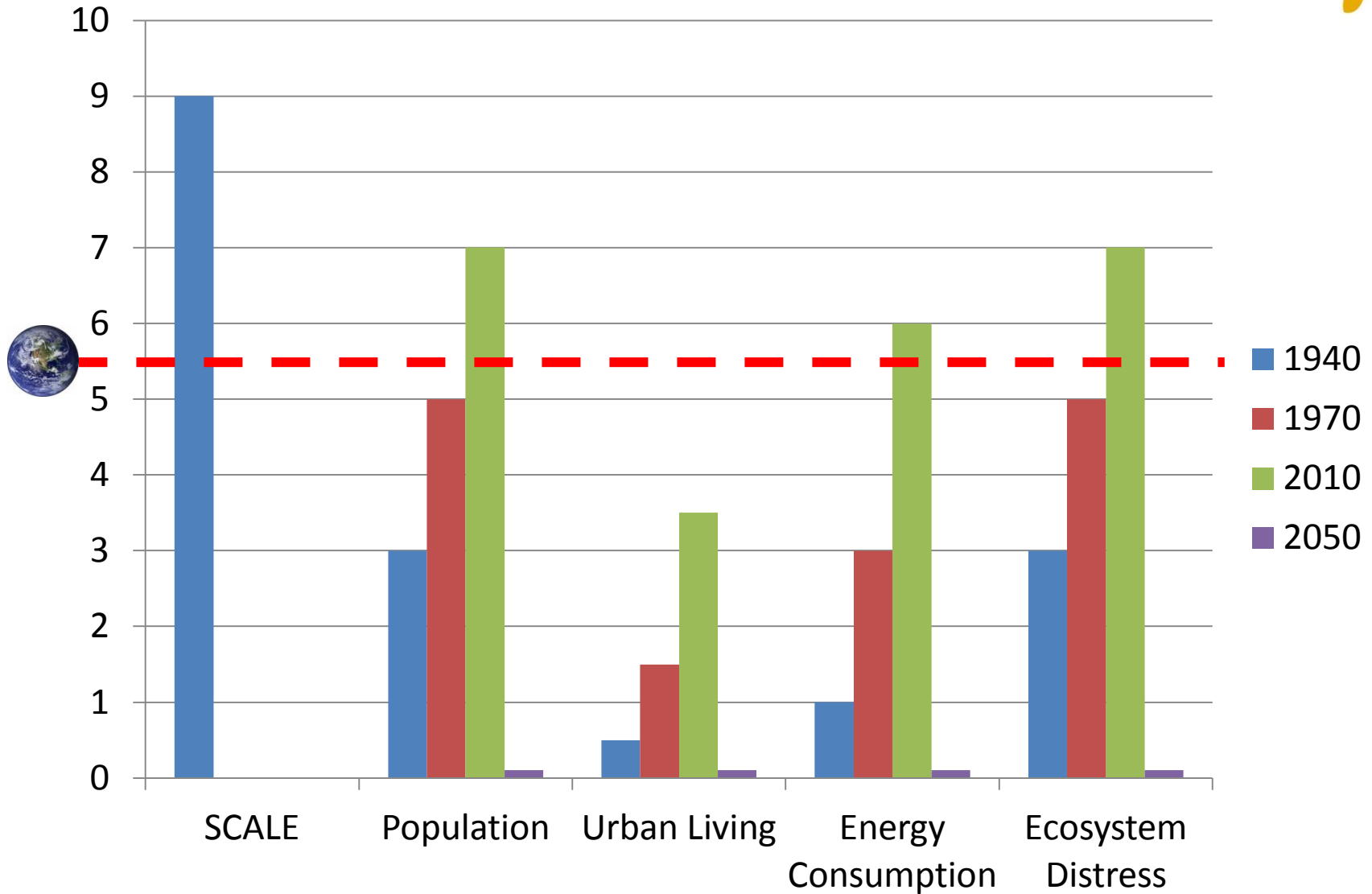
Changes in My Life-time - 1940



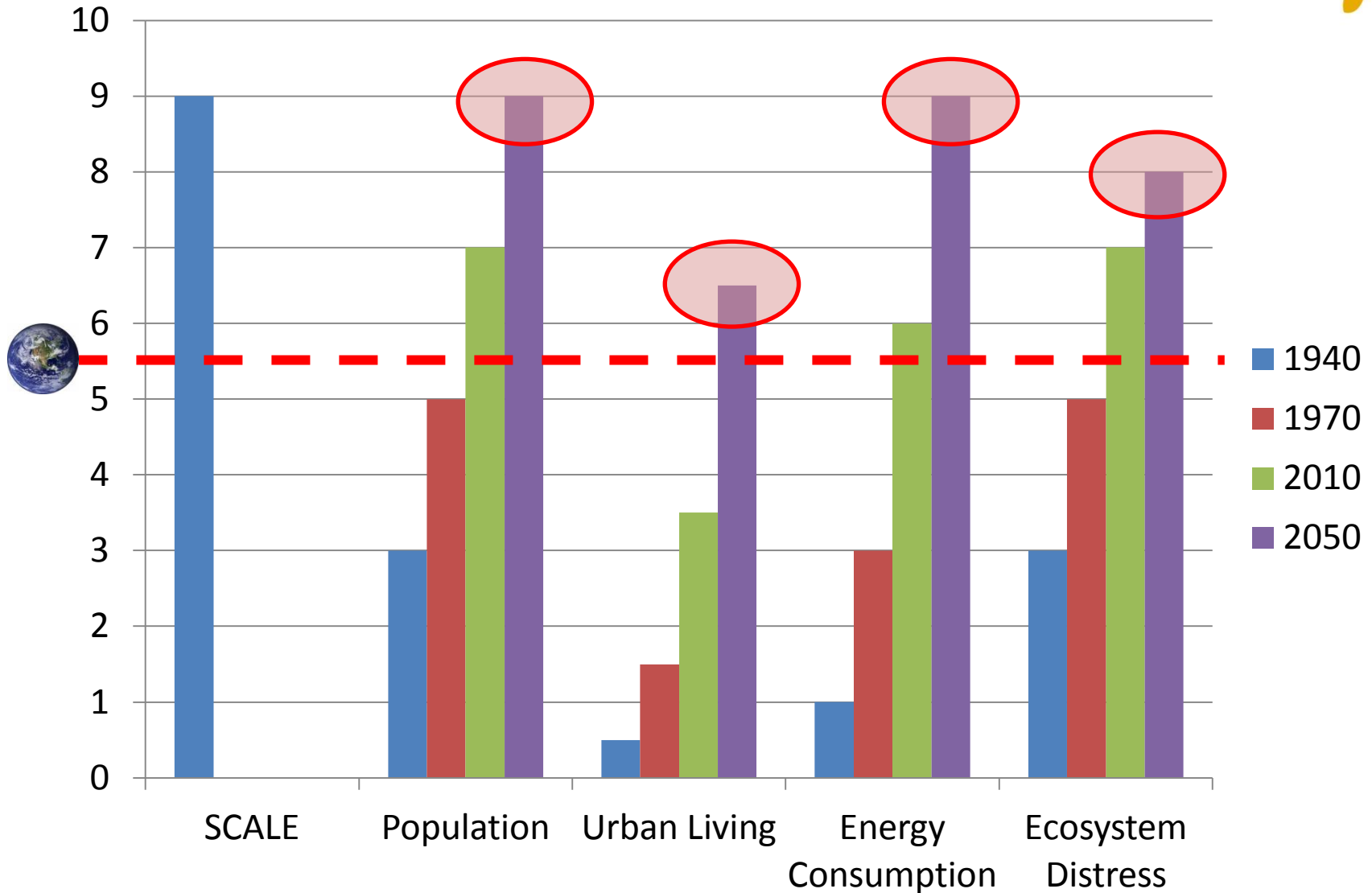
Changes in My Life-time - 1970

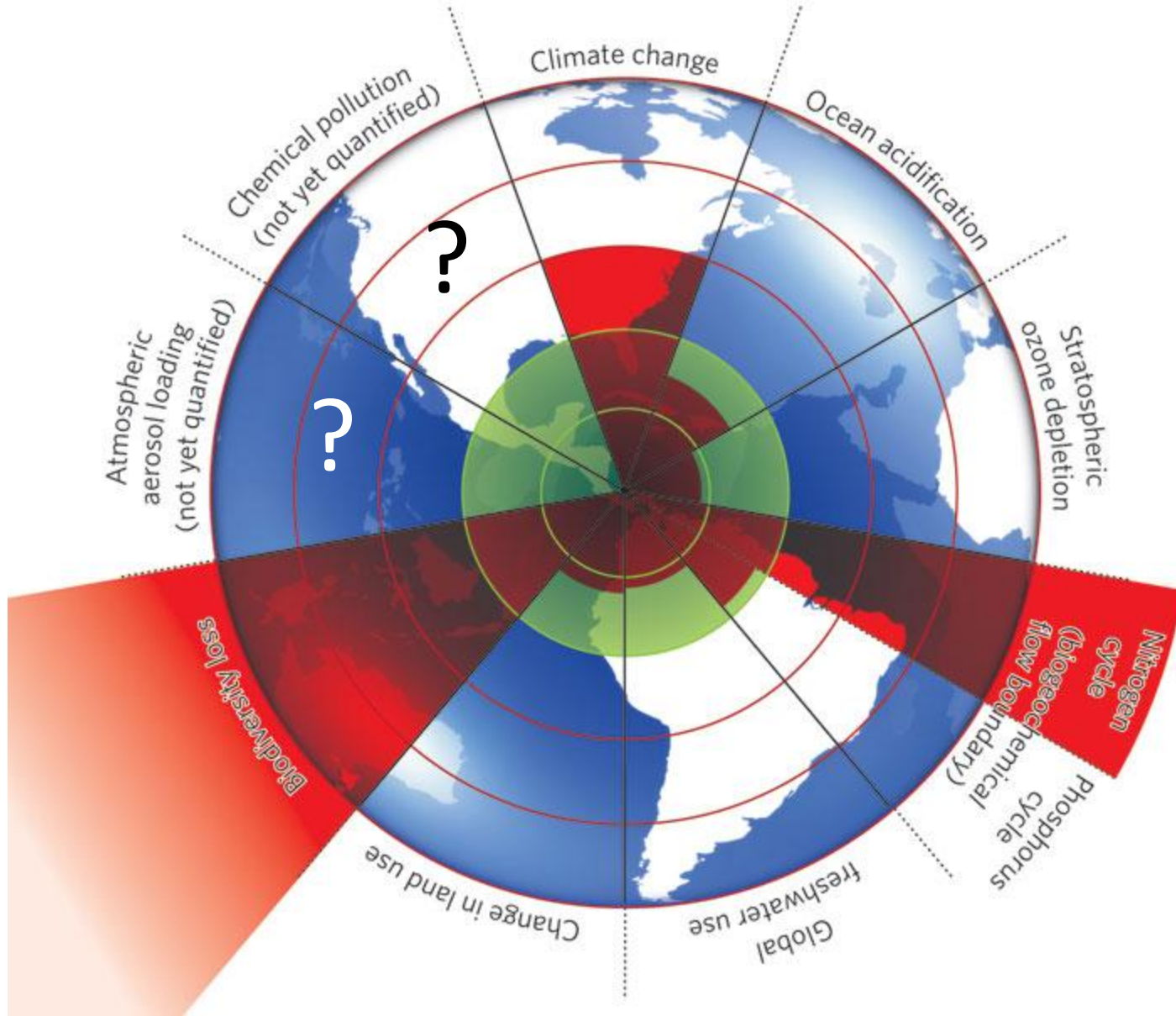


Changes in My Life-time - 2010

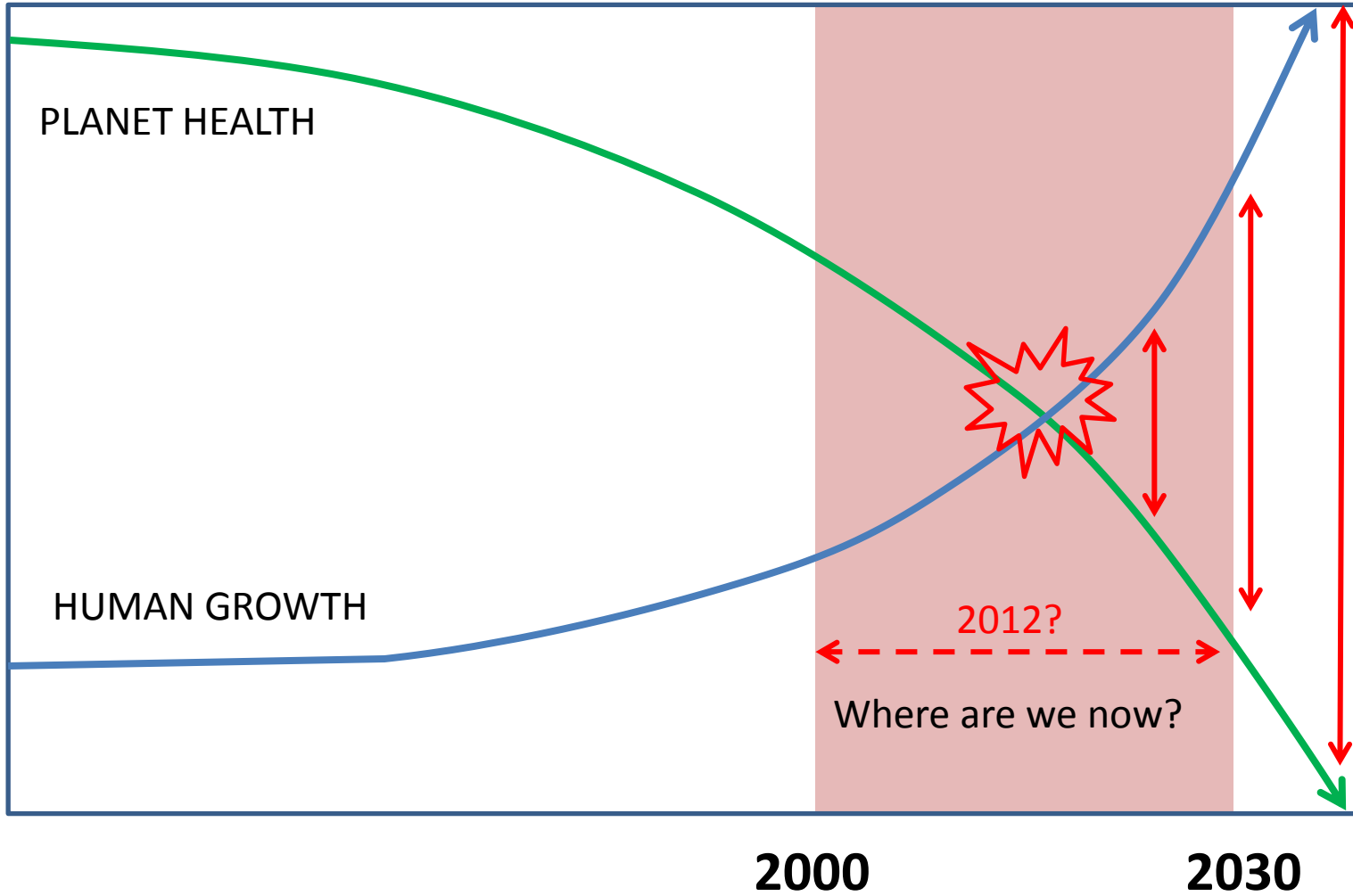


Changes Beyond My Life-time -2050



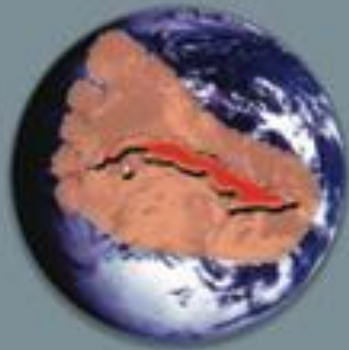


The Dynamic Tipping Point



The One Planet Living Challenge

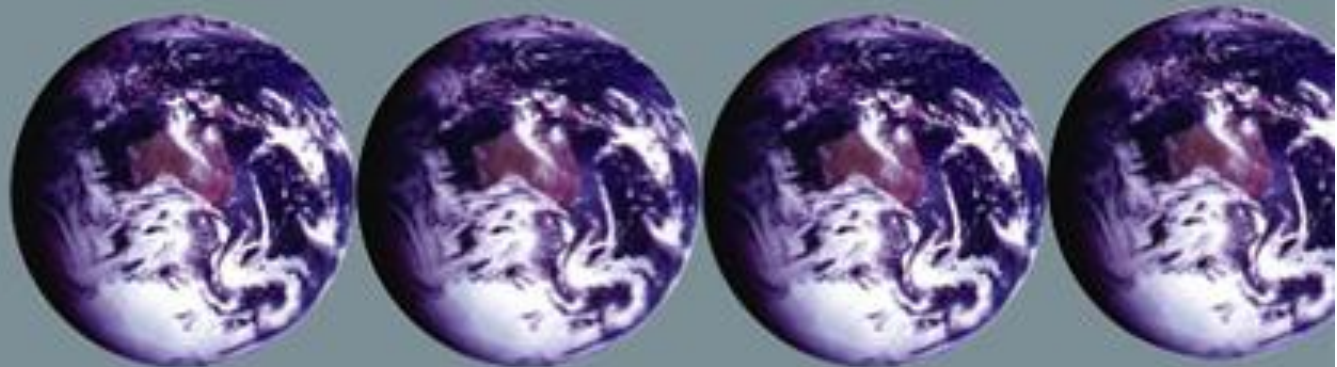
What this means...



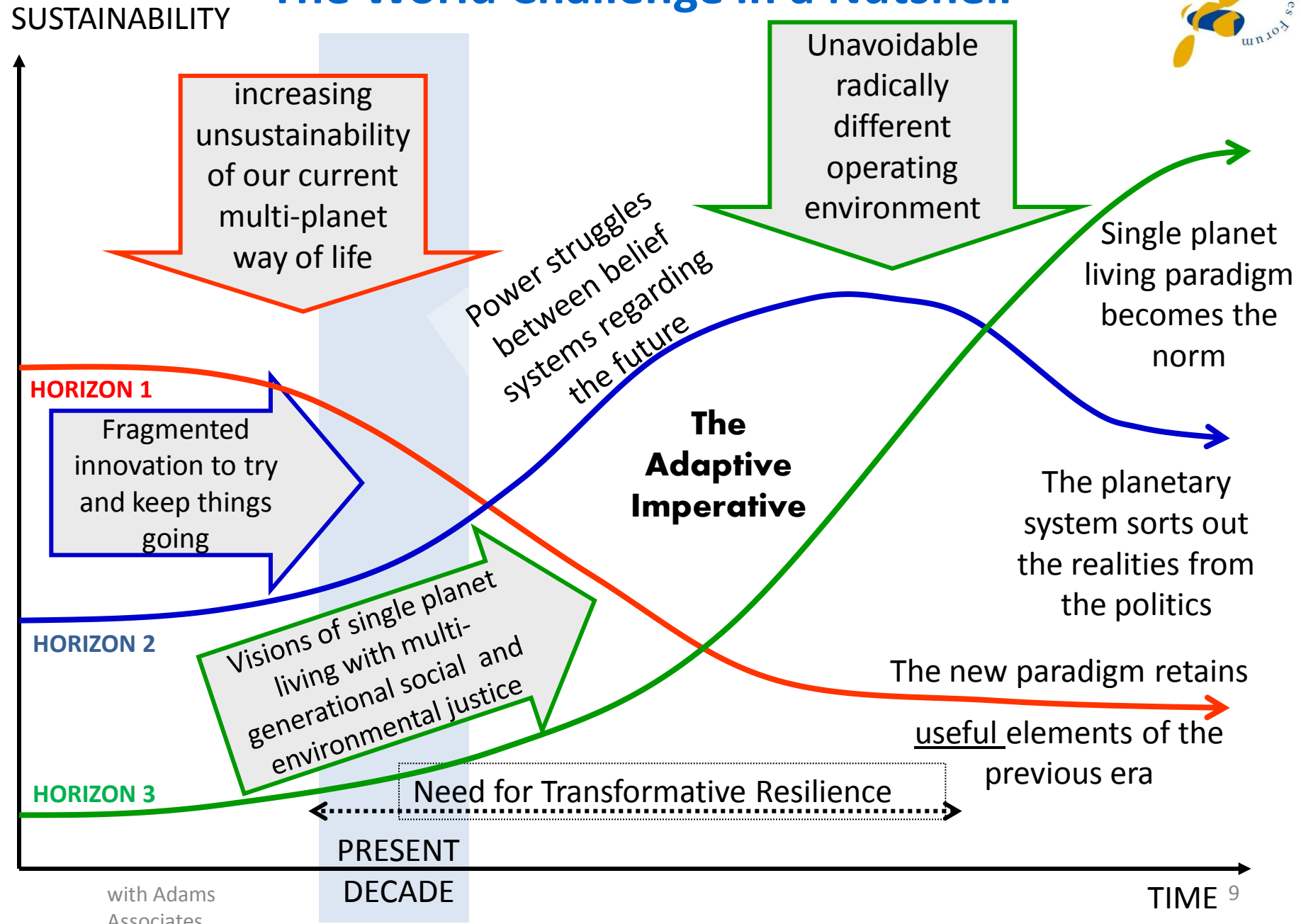
If everyone lived like a Cuban we could sustain current population with the resources of one planet earth

If everyone lived like an Australian we'd need

3.7 planets



The World Challenge in a Nutshell



Things are heating up!



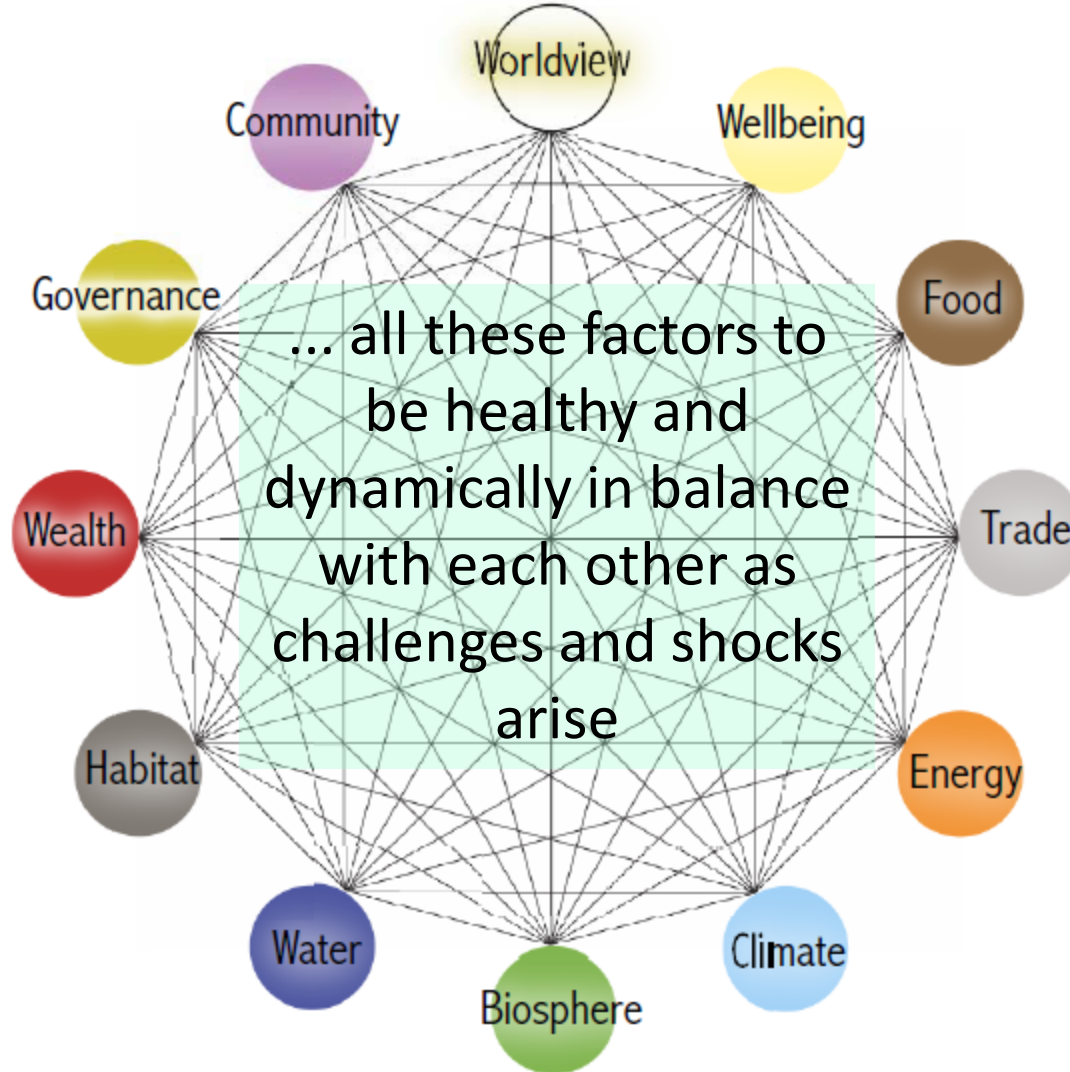
A large, circular image of the Earth as seen from space, showing the blue oceans and white clouds against the black background of space. A blue rectangular box with a red border is overlaid on the center of the Earth, containing the main text.

World System Envisioning Tool

**for today's
predicament**

**to design a
better future**

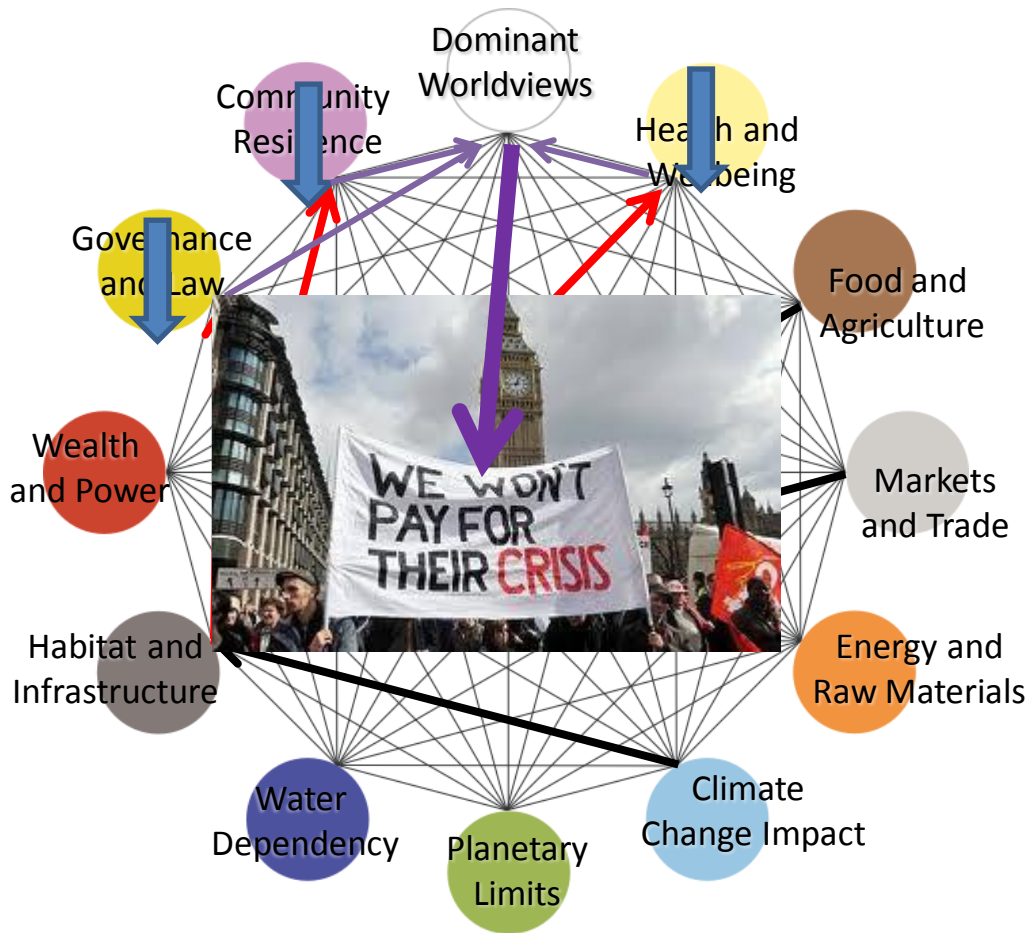
A Resilient Society Requires...



From Brittle Society to Resilient Society



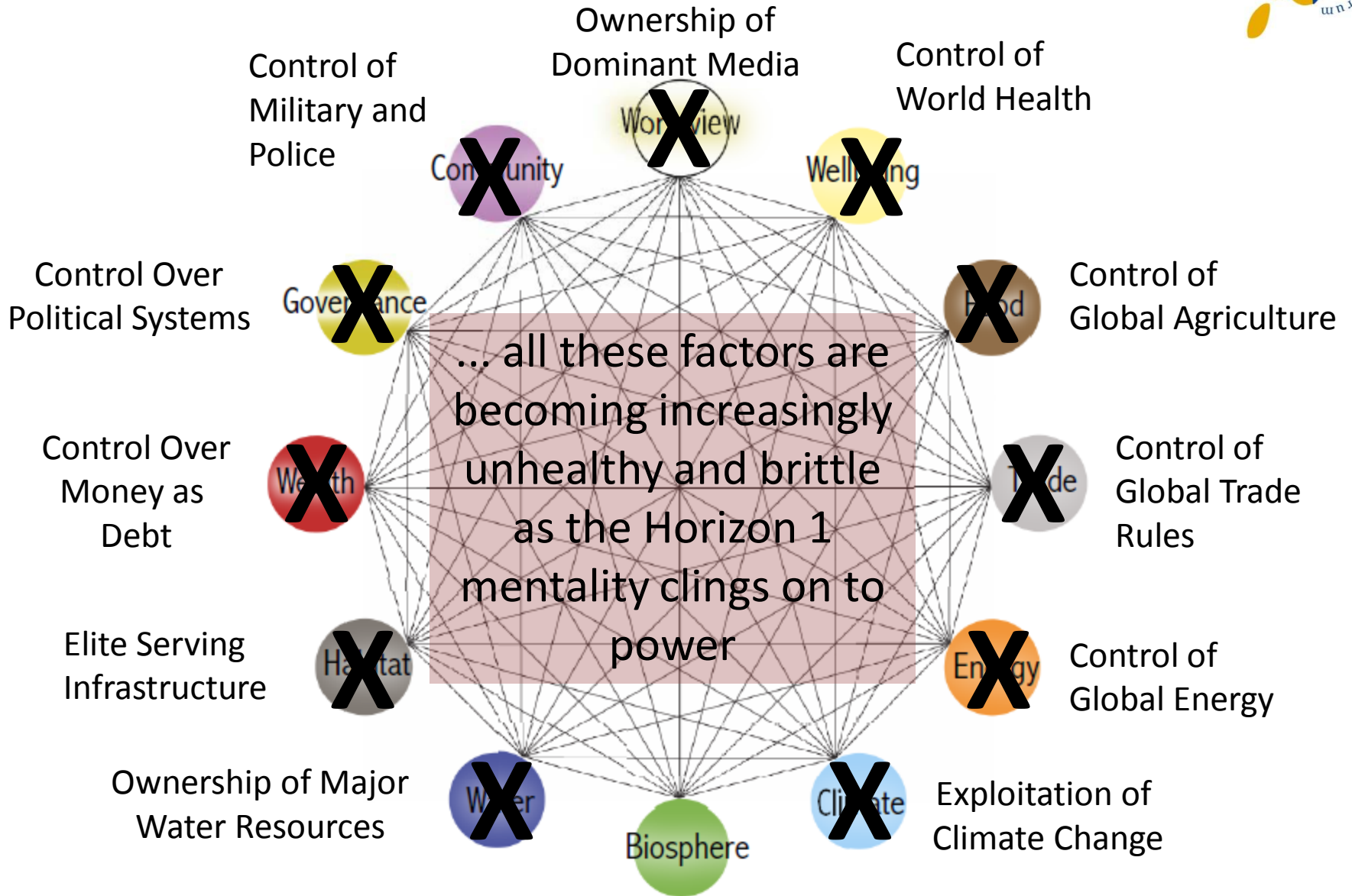
Illustrating Synchronous Failure



Climate Catastrophe, Economic Collapse, Food Supply Conflict

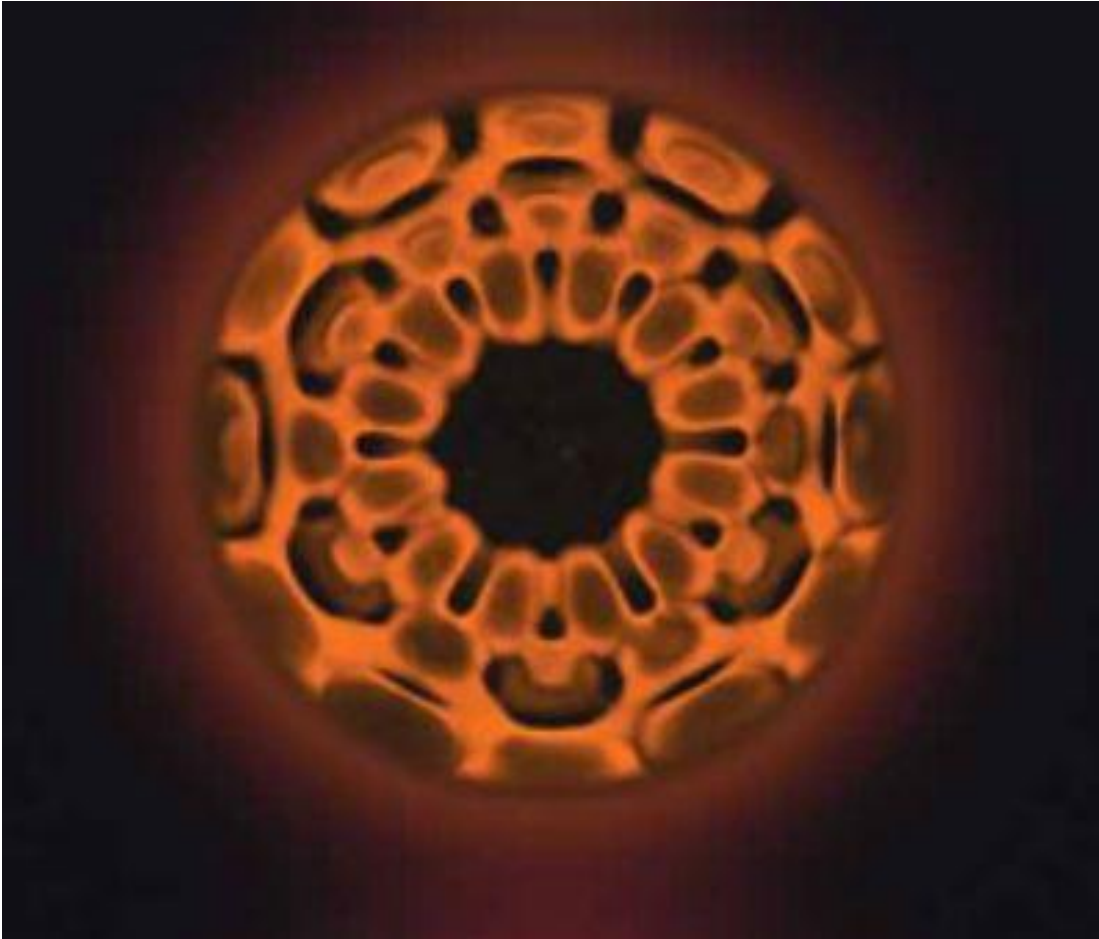
- Extreme planetary events cause disruption of urban habitats where the majority of people live – infrastructure is wrecked
- *At the same time*, failure of regulation of the financial system triggers economic collapse
- *At the same time*, extensive global crop failure leaves millions starving
- The result is a failure of governance, public health crises and community breakdown.
- Distressed populations explode with large scale aggression towards the rich and powerful

Horizon 1 - Brittle Control



"but Pachamama doesn't do politics!"

Horizon 3 - Transformative Resilience



Bringing It All Together

1. Food as sustenance before commerce
2. Trade and technology as support for life
3. Renewable energy for most needs
4. Reduction of man-made carbon emissions to balance
5. Living within planetary limits with restoration
6. Water as a right not a commodity
7. Resilient infrastructure on multiple scales
8. Wealth distributed within a humane bandwidth
9. Recursive levels of governance between local and global
10. Resilient communities living to an adaptive norm
11. Diverse cultures all sharing a common world view of one-planet living
12. Determinants of health and wellbeing top priority

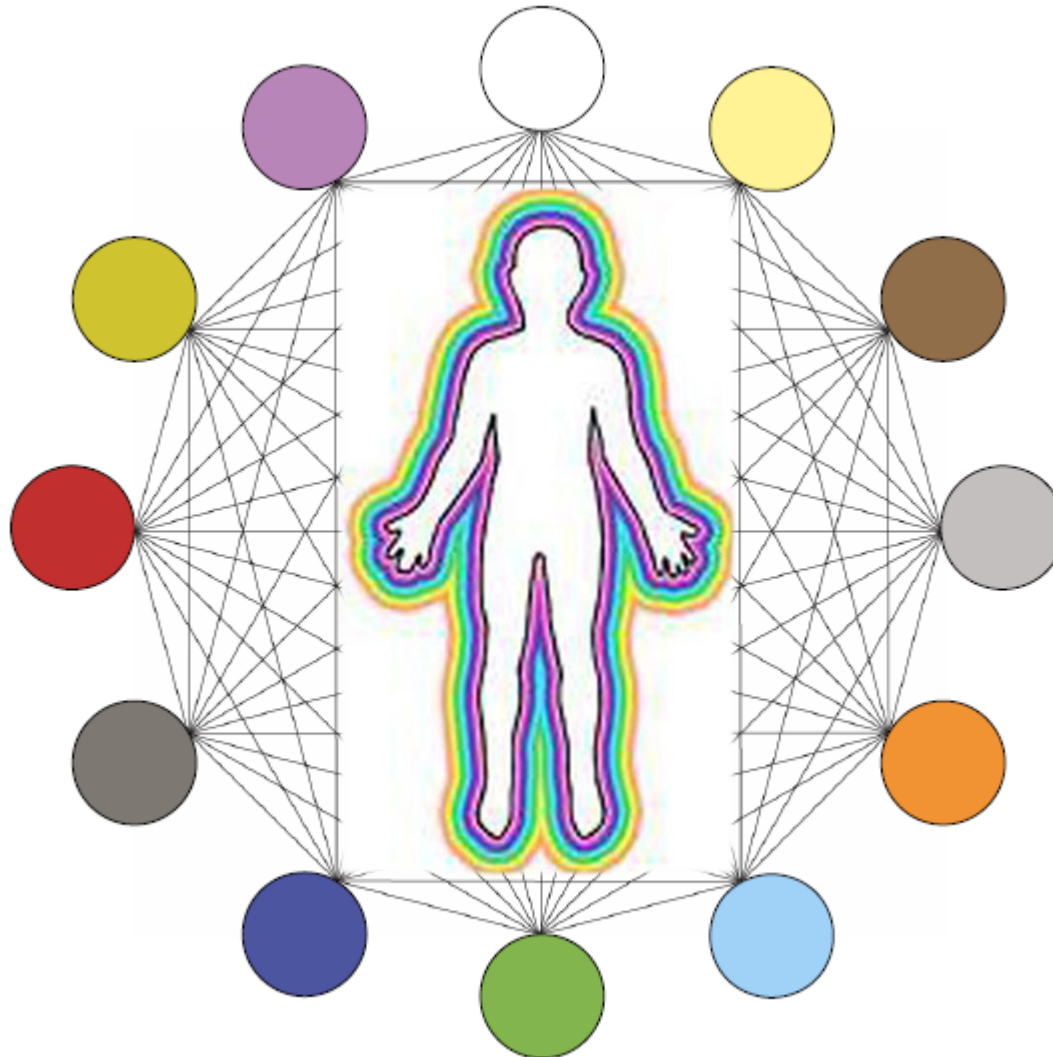
Horizon 2 – Transformative Innovation



 **Incredible Edible**
TODMORDEN



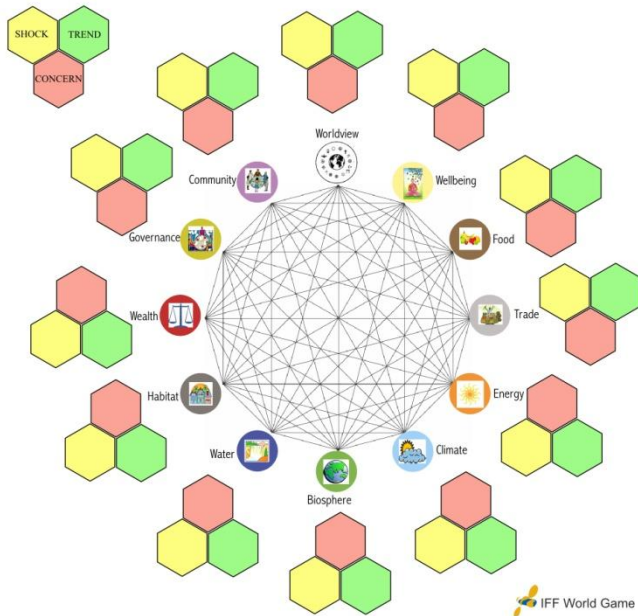
There YOU are where you live



....in the middle of all this

So how can we engage with all this complexity and find the profound simplicity?

The IFF World Game



- We can evoke the transformative resonance through serious play where we role play running our world according to our own insights, as a role play.
- A supportive knowledge base is scanned from the best science and understanding we can tap into.
- Having engaged with the game board and the relevant data we evoke the harmony using the methods of wisdom council gifted from the indigenous communities of the world.

IFF World Game

Making the Connections



IFF World Game Future of Dundee



21st Century Hopscotch! The next generations can do it better



Please don't get depressed.

From massive intractable challenges come our best responses.

You are invited to play your way creatively into a better future.

Seek playful forms
that generate serious
results

